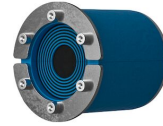
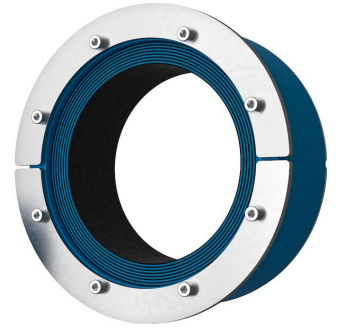




Etanșare Roxtec RS

Etanșare rotundă singulară pentru un cablu sau o țevă.

Roxtec RS este o etanșare singulară pentru cabluri sau țevi, în manșoane metalice sau găuri existente. Etanșarea are două jumătăți cu straturi detașabile, putând fi ajustată pentru cabluri și țevi de diferite dimensiuni. Designul soluției simplifică instalarea în jurul cablurilor sau țevilor existente.



- Rezistent la rozătoare
- Rapid și ușor de instalat

Caracteristicile produsului



Certificată la foc



Etanșă la apă



Etanșă la gaze

Structura instalației



Metal



Beton

Tip de montaj



Gol existent



Piesă de trecere existentă

Clase și certificate

Foc

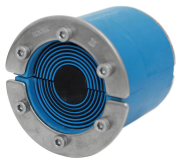
- CLASA A conform Codului FTP IMO 2010
- Clasificare E/EI conform EN 13501
- Clasificare E/EI conform EN 45545 E30
- Clasificare F/T conform UL 1479
- CLASA H, conform Codului FTP IMO 2010 + curba de încărcare la incendiu HC (hidrocarburi)
- Foc cu jet, conform ISO 22899-1 și OTI 95634

Etanșeitate

- Gaz: 2,67 bari (catastrofică)
- Apă: 4 bari (catastrofică)

Date componente de etanșare

Componente de etanșare



Etanșare RS



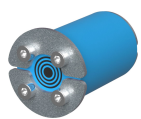
Lubrifiant Roxtec

Pentru mai multe informații, vă rugăm să vizitați [roxtec.com](https://www.roxtec.com).

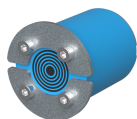


Kituri de treceri preconfigurate

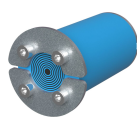
mm/kg



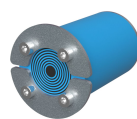
RS 25 AISI316



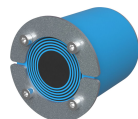
RS 31 AISI316



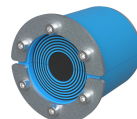
RS 43 AISI316



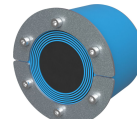
RS 50 AISI316



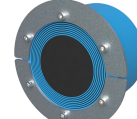
RS 68 AISI316



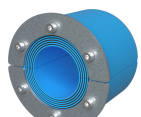
RS 75 AISI316



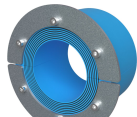
RS 100 AISI316



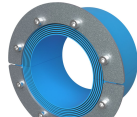
RS 125 AISI316



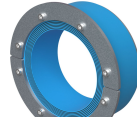
RS 100 AISI316 WOC



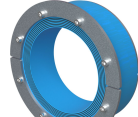
RS 125 AISI316 WOC



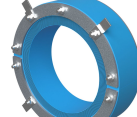
RS 150 AISI316 WOC



RS 175 AISI316 WOC



RS 200 AISI316 WOC



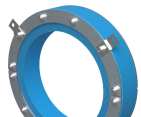
RS 225 AISI316 WOC



RS 250 AISI316 WOC



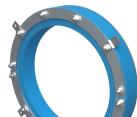
RS 300 AISI316 WOC



RS 350 AISI316 WOC



RS 400 AISI316 WOC



RS 450 AISI316 WOC



RS 500 AISI316 WOC



RS 550 AISI316 WOC



RS 600 AISI316 WOC



RS 644 AISI316 WOC

Titlu	Configurație	Dimensiuni deschidere Ø	Greutate	Nr. art.
RS 25 AISI316	1x (3.6-12.0)	25 - 26	0.08	RS00100251023
RS 31 AISI316	1x (4.0-17.0)	31 - 32	0.09	RS00100311023
RS 43 AISI316	1x (4.0-23.0)	43 - 45	0.24	RS00100431023
RS 50 AISI316	1x (8.0-30.0)	50 - 52	0.31	RS00100501023
RS 68 AISI316	1x (26.0-48.0)	68 - 70	0.5	RS00100681023
RS 75 AISI316	1x (24.0-54.0)	75 - 77	0.6	RS00100751023
RS 100 AISI316	1x (48.0-70.0)	100 - 102	1	RS00101001023
RS 125 AISI316	1x (66.0-98.0)	125 - 127	1.6	RS00101251023
RS 100 AISI316 WOC	1x (48.0-70.0)	100 - 102	0.8	RS00001001023
RS 125 AISI316 WOC	1x (66.0-98.0)	125 - 127	1.4	RS00001251023
RS 150 AISI316 WOC	1x (93.0-119.0)	150 - 152	1.6	RS00001501023
RS 175 AISI316 WOC	1x (119.0-145.0)	175 - 177	2.3	RS00175750021
RS 200 AISI316 WOC	1x (138.0-170.0)	200 - 203	2.7	RS00200750021
RS 225 AISI316 WOC	1x (151.0-181.0)	225 - 228	3.2	RS00002250021
RS 250 AISI316 WOC	1x (176.0-206.0)	250 - 253	3.3	RS00002500021
RS 300 AISI316 WOC	1x (206.0-236.0)	300 - 303	5.7	RS00003000021
RS 350 AISI316 WOC	1x (244.0-286.0)	350 - 353	7.2	RS00003500021
RS 400 AISI316 WOC	1x (294.0-336.0)	400 - 403	9.4	RS00004000021
RS 450 AISI316 WOC	1x (344.0-386.0)	450 - 453	10.7	RS00004500021
RS 500 AISI316 WOC	1x (394.0-436.0)	500 - 503	13	RS00005000021
RS 550 AISI316 WOC	1x (444.0-486.0)	550 - 553	14.4	RS00005500021
RS 600 AISI316 WOC	1x (494.0-536.0)	600 - 603	15.7	RS00006000021
RS 644 AISI316 WOC	1x (538.0-580.0)	644 - 647	17	RS00006440021



The product information provided by Roxtec does not release the purchaser of the Roxtec system, or part thereof, from the obligation to independently determine the suitability of the products for the intended process, installation and/or use.

Roxtec gives no guarantee for the Roxtec system or any part thereof and assumes no liability for any loss or damage whatsoever, whether direct, indirect, consequential, loss of profit or otherwise, occurred or caused by the Roxtec systems or installations containing components not manufactured by an authorized manufacturer and/or occurred or caused by the use of the Roxtec system in a manner or for an application other than for which the Roxtec system was designed or intended.

Roxtec expressly excludes any implied warranties of merchantability and fitness for a particular purpose and all other express or implied representations and warranties provided by statute or common law. User determines suitability of the Roxtec system for intended use and assumes all risk and liability in connection therewith. In no event shall Roxtec be liable for indirect, consequential, punitive, special, exemplary or incidental damages or losses.

The Roxtec products are offered and sold in accordance with the conditions of the Roxtec General Terms of Sales. The latest version of the Roxtec General Terms of Sales can be downloaded from <https://www.roxtec.com/en/about-us/about-roxtec/general-terms-of-sales/>

We reserve the right to make changes to the product and technical information without further notice. Any errors in print or entry are no claims for indemnity. The content of this publication is the property of Roxtec International AB and is protected by copyright.

This document was generated on: 2024-04-06